

GULLCO**GULLCO INTERNATIONAL**
WELDING AND CUTTING AUTOMATION

WELDING AND CUTTING AUTOMATION

KBM® PLATE BEVELER

PRODUCTIVITY – DURABILITY – SERVICE

The Gullco KBM® is used throughout the world to automate the plate beveling process. The KBM® is durable with many features which include:

- ✓ Up to 4m per minute bevel speed
- ✓ Bevels Mild Steel, Stainless Steel & Aluminum
- ✓ Most robust motor gearbox in the industry
- ✓ Energy Efficient Operation
- ✓ Self-aligning, spring-loaded caster wheel assemblies
- ✓ Hydraulic undercarriage allows beveler to meet all standard bench heights quickly and easily
- ✓ Hoisting hook for portability and transport
- ✓ Produces clean bevels which are immediately ready to weld



**THE MOST DURABLE,
DYNAMIC, AND VERSATILE
PLATE BEVELER IN THE INDUSTRY**

KBM® BEVELERS

FEATURE RICH ENGINEERED DESIGN



HIGH SPEED UP TO 4M PER MIN*



QUIET OPERATION



NO HEAT AFFECTED ZONE

Zero heat transfer into material, eliminating distortion.



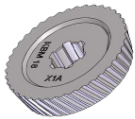
NO VIBRATION OPERATION

Removes operator fatigue and improves workplace safety



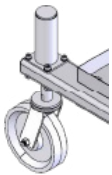
EXCEPTIONAL MOTOR GEARBOX

Class leading, high quality heavy duty gear-motor



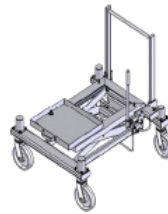
DURABLE CUTTER

Superior cutter properties due to extensive research and engineering proven over years of industry use.



CASTER SPRING LOADED WHEEL ASSEMBLIES

The spring loaded caster wheel assemblies allow for smooth positioning and beveler operation on uneven surfaces



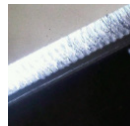
HYDRAULIC UNDERCARRIAGE

Setting and adjusting the height of the beveler is quick and uniform, cutting down on material handling cost by being able to bring the beveler to the workpiece



VARIETY OF BEVEL ANGLES

Angle bevel pins for 30°, 22 ½°, 37 ½°, 45° and 55°. Other bevel angles available upon request.



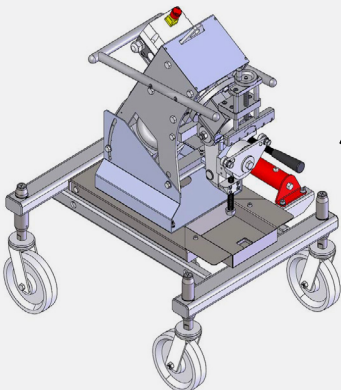
CONSISTENT RELIABLE BEVEL

Constant bevel angle and root face are maintained throughout the bevel

— REVERSIBLE & CONVERTIBLE CONVENIENCE —

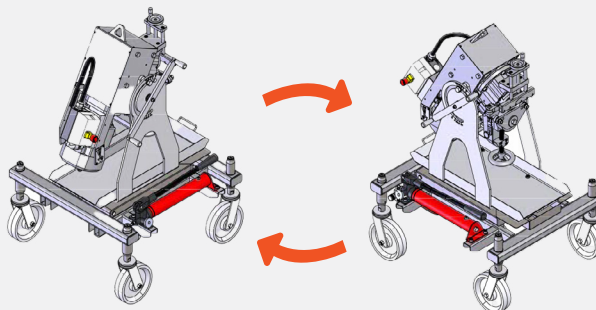
KBM® BEVELER

For high speed beveling of the topside of the plate.



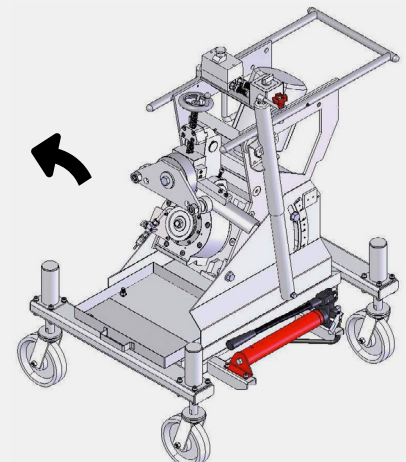
KBM-R REVERSIBLE UNDERCARRIAGE & CONVERSION KIT

Convert existing bevelers into a reversible beveler capable of beveling the top and bottom of the plate.



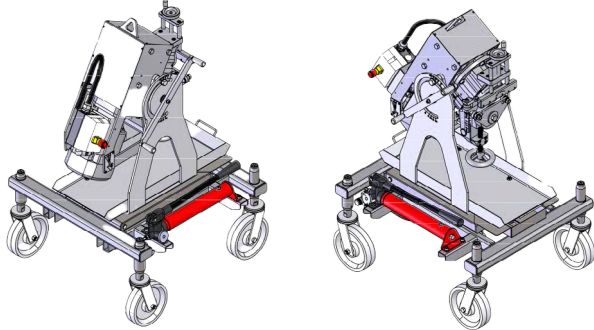
KBM®U UNDERSIDE BEVELERS

Perfect for high speed beveling of the underside of the plate without the need for flipping the work piece over. In combination with the KBM® efficiency is greatly increased when beveling both the top and bottom of the plate.



KBM®R REVERSIBLE UNDERCARRIAGE

Bevel both top and bottom of the plate with one reversible beveling machine. Lockable pivot system allows the beveler to work on the top or bottom side of the plate, reducing material handling providing increased productivity and cost savings in applications which require two sided beveling.



ACCESSORIES AVAILABLE:

- KBM®R: Reversible Undercarriage Conversion Kit
- Hydraulic Undercarriage
- 3 Cutter types available for different material densities
- Angle bevel pins for standard bevel angles (custom angles available)
- Narrow clamp roller assembly (for narrow material)
- Slide base kit (for thick material)
- Adjustable plate support for improved feeding
- Air jet assembly (Eliminates chip congestion around cutter)
- Toolbox
- Chip collection tray

KBM-18 SPECIFICATIONS

- Maximum Bevel Width:** 0.71" (18.00 mm) at standard 30° bevel angle on material with a tensile strength of 64,000 lb/ in2 (45 Kg/mm2)
- Maximum Bevel Depth:** 0.61" (15.6 mm) at standard 30° bevel angle on material with a tensile strength of 64,000 lb/in2 (45 Kg/mm2)
- Min. Plate Thickness:** 1/4" (6.0mm) Thinner material can be beveled, consult the factory for details
- Max. Plate Thickness:** 1.45" (37mm)
- Bevel Speed:** 156" (400 cm) per minute*
- Motor:** 2HP, 3 Phase, available for 230, 460 and 575V~ at 60Hz and also 380 and 400/415V~ at 50Hz supply
- Weight:** 340 lbs. (154Kg.) including undercarriage assembly

* Top speed can vary depending on bevel depth, voltage and frequency fluctuation

☑ **KBM-18® can be supplied with the following standard equipment:**

1- KBM-18-X1C Mild Steel Cutter | 1- set Bevel Angle Pins for 22 1/2°, 30°, 37 1/2°, 45° and 55° | 1- Tool Kit



KBM-28 SPECIFICATIONS

- Maximum Bevel Width:** 1.10" (28.00 mm) at standard 30° bevel angle on material with a tensile strength of 64,000 lb/in2 (45 Kg/mm2)
- Maximum Bevel Depth:** 0.95" (24.2 mm) at standard 30° bevel angle on material with a tensile strength of 64,000 lb/in2 (45 Kg/mm2)
- Min. Plate Thickness:** 5/16" (8.0 mm)
- Max. Plate Thickness:** 1.96" (50mm) Thicker material can be accommodated with optional slide base kit
- Bevel Speed:** 78.7" (200 cm) per minute*
- Motor:** 3HP, 3 phase, available for 230, 460 and 575V~ at 60Hz and also 380 and 400/415V~ at 50Hz supply
- Weight:** 979 lbs. (444Kg.) including undercarriage assembly

* Top speed can vary depending on bevel depth, voltage and frequency fluctuation

☑ **KBM-28® can be supplied with the following standard equipment:**

1- KBM-28-X1C Mild Steel Cutter | 1- Set Bevel Angle Pins for 22 1/2°, 30°, 37 1/2°, 45° and 55° | 1- Tool Kit

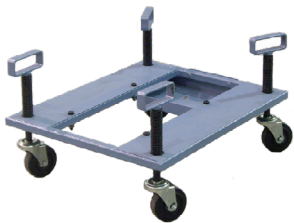


KBM-18-080 HYDRAULIC ADJUSTABLE UNDERCARRIAGE



For easy height adjustment KBM-18® units can be supplied with two types of undercarriage. Both are supplied with Gullco exclusive self-aligning caster wheel assemblies to maintaining a uniform bevel and consistent root face. Undercarriage sold separate.

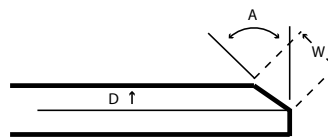
KBM-18-069 CASTER SPRING LOADED ADJUSTABLE UNDERCARRIAGE



Adjustable undercarriages come with Gullco's adjustable height self-aligning spring loaded caster wheel assemblies for self-propelled operation. Best suited for applications where constant machine height is required. The spring-loaded wheels help to eliminate imperfections in the ground to ensure a clean consistent bevel. Sold separate.

MAXIMUM RECOMMENDED BEVELING CAPACITIES

MAXIMUM RECOMMENDED BEVELING CAPACITIES
KBM-18-100 | KBM-18-069



BEVEL ANGLE	TENSILE STRENGTH					
	64,000 lbs/in ² (45 kg/mm ²)		71,000 lbs/in ² (50 kg/mm ²)		85,000 lbs/in ² (60 kg/mm ²)	
A	W	D	W	D	W	D
22 1/2°	0.71" (18 mm)	0.66" (16.6 mm)	0.67" (17 mm)	0.62" (15.7 mm)	0.55" (14 mm)	0.51" (13 mm)
30°	0.71" (18 mm)	0.61" (15.6 mm)	0.59" (15 mm)	0.51" (13 mm)	0.51" (13 mm)	0.44" (11.2 mm)
37 1/2°	0.67" (17 mm)	0.53" (13.5 mm)	0.55" (14 mm)	0.44" (11.1 mm)	0.47" (11.9 mm)	0.37" (9.5 mm)
45°	0.67" (17 mm)	0.47" (12 mm)	0.55" (14 mm)	0.39" (9.9 mm)	0.47" (11.9 mm)	0.33" (8.4 mm)
55°	0.59" (15 mm)	0.34" (8.6 mm)	0.55" (14 mm)	0.32" (8 mm)	0.47" (11.9 mm)	0.27" (6.8 mm)



KBM-18-100
KBM-18-069

SPECIFICATIONS ARE SUBJECT TO CHANGE WITHOUT NOTICE. ALL DIMENSIONS ARE NORMAL.

KBMF2204

GULLCO, KAT, KBM, MOGGY, KATBAK & SAM are registered trademarks of Gullco Enterprises Limited

CANADA - GULLCO INTERNATIONAL LIMITED Tel: +1 905 953 4140 · Email: sales@gullco.com

USA - GULLCO INTERNATIONAL INC. Tel: +1 440 439 8333 · Email: ussales@gullco.com

EUROPE - GULLCO INTERNATIONAL (U.K) LIMITED Tel: +44(0) 1257 253579 · Email: uksales@gullco.com

AUSTRALIA - GULLCO INTERNATIONAL PTY LTD.. Tel: + 61 (0) 7 3348 5515 · Email: ausales@gullco.com

INDIA - GULLCO INTERNATIONAL INDIA PVT LTD. Tel: +91 72 7606 0382 · Email: indsales@gullco.com

CHINA - GULLCO INTERNATIONAL SHANGHAI LIMITED Tel: +8621.50460341 · Email: suntech@online.sh.cn

SINGAPORE - GULLCO INTERNATIONAL LIMITED Tel: 1(416)801-9946 · Email: anmin@gullco.com

GERMANY - MS GMBH MELCHIOR SCHWEISSTECHNIK Tel: +49 (0)173 5437722 · Email: dennis.wagener@ms-gmbh.com

LATIN AMERICA - WELDSPRAY CONSULTING LLC Tel: +55 11 96590 3883 · Email: rogerio.macedo@gullco.com

AFRICA - WELDPLUS PTY LTD Tel: +27 83 775 1144 · Email: john@weldplusintl.com