

# KATBAK® CERAMIC WELD BACKING

CERAMIC WELD BACKING TO MEET YOUR NEEDS

## TANK BUILDING



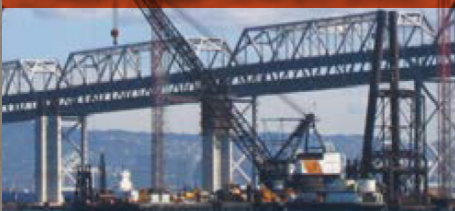
## PIPE WELDING



## SHIP BUILDING



## INFRASTRUCTURE



As a manufacturer and distributor of ceramics, Gullco can provide you with a KATBAK® ceramic weld backing to meet your needs. If you don't see the ceramic you need in this brochure contact Gullco or your Gullco distributor to discuss your specific requirement.

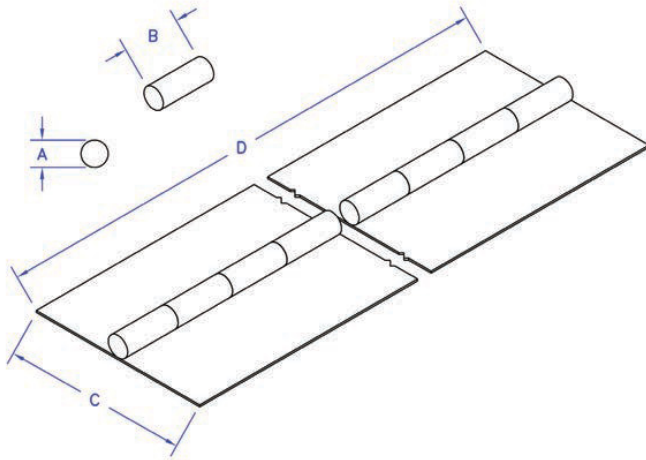
### Features which include:

- ✓ Impart X-ray Quality Back Beads On Root Pass
- ✓ Weld One Side Only
- ✓ Deposit More Weld Metal
- ✓ Root Weld And Fill In One Pass
- ✓ Eliminate Defects And Rework
- ✓ Eliminate Costly Unnecessary Gouging And Grinding
- ✓ Sizes 1/4" (6.3 mm) to 2" (50.8 mm)
- ✓ Special Sizes And Configurations Available
- ✓ Conveniently Packaged and Sealed In Plastic For Moisture Proof Protection
- ✓ Wider Heat Receptive Pressure Sensitive Foil For Improved Adhesion To Work Piece

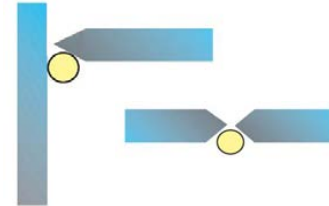
## IMPROVE WELD QUALITY AND REDUCE COST WITH KATBAK® CERAMIC WELD BACKING

Gullco does not use any dangerous components in our ceramics

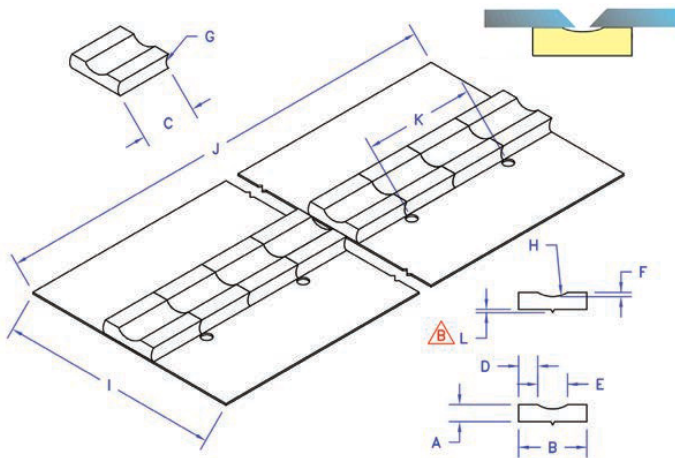
**1G6-RD • 1G9-RD • 1G13-RD • 1G15-RD • 1G20-RD KATBAK® CERAMIC WELD BACKING**



A	1G6-RD	1/4	6mm
	1G9-RD	3/8	9 mm
	1G13-RD	1/2	13mm
	1G15-RD	5/8	15mm
	1G-20RD	7/8	20mm
B		1"	25.4 mm
C		3" Tape	76.2 mm
D		24"	609.6 mm

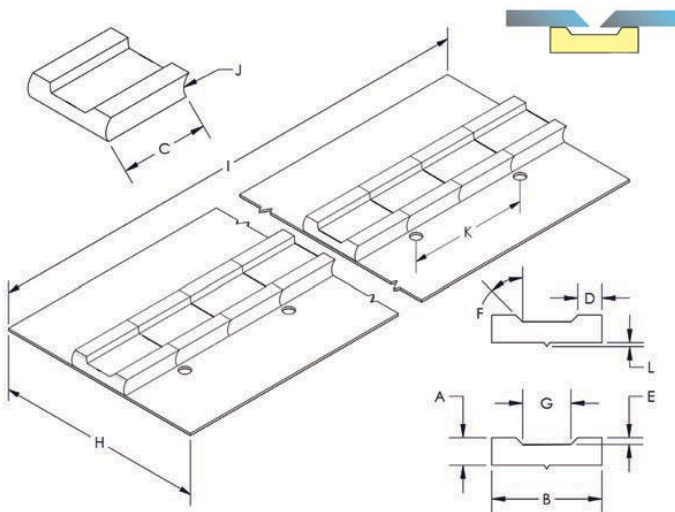


**1G42 -R KATBAK® CERAMIC WELD BACKING**



A	1/4"	6.35 mm
B	1"	25.4 mm
C	1" Min.	25.4 mm
D	9/32"	7.14 mm
E	7/16"	11.11 mm
F	1/16"	1.58 mm
G	3/16" Radius	4.76 mm
H	13/32" Radius	10.31mm
I	4" Tape	101.60 mm
J	24" Overall	609.60 mm
K	2"	50.80 mm
L	3/64"	1.2 mm

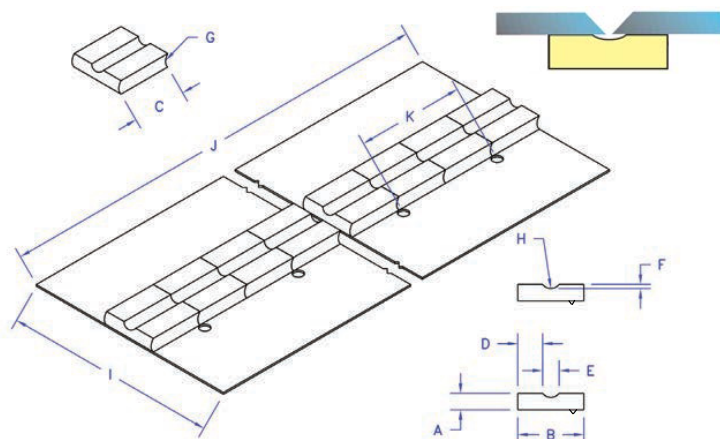
**1G93 -R KATBAK® CERAMIC WELD BACKING**



A	5/16" MIN.	[7.93mm]
B	7/8" Min. - 1" Max.	(22-25mm)
C	1"	(25.4mm)
D	5/32" (Ref.)	(3.96mm)
E	1/16"	(1.58mm)
F	45 °	45 °
G	7/16"	(11.11mm)
H	4" MIN.	(101.6mm)
I	24" Overall	(609.6mm)
J	3/16" Radius	(4.76mm)
K	2"	(50.80 mm)
L	3/64"	(1.2 mm)

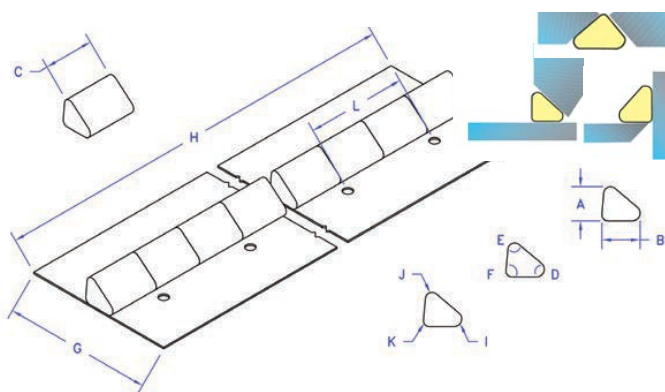
\* Available in 1/4" to 2" (6.3 mm to 50.8 mm) tiles

**1G43-R – KATBAK® CERAMIC WELD BACKING**



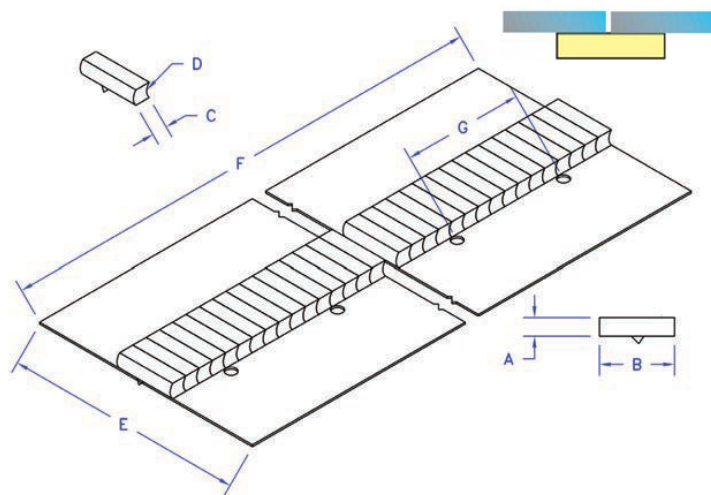
A	1/4"	6.35 mm
B	1"	25.4 mm
C	1" Min.	25.4 mm
D	3/8"	9.52 mm
E	1/4"	6.35 mm
F	1/16"	1.58 mm
G	3/16" Radius	4.76 mm
H	5/32" Radius	3.96 mm
I	4" Tape	101.60 mm
J	24" Overall	609.60 mm
K	2"	50.80 mm
L	3/64"	1.2 mm

**1G33-45 • 1G33-60 • 1G33-90 KATBAK® CERAMIC WELD BACKING**



B	1"	25.4 mm
C	1" Min.	25.4 mm
D	3/8"	9.52 mm
E	1/4"	6.35 mm
F	1/16"	1.58 mm
G	3/16" Radius	4.76 mm
H	5/32" Radius	3.96 mm
I	4" Tape	101.60 mm
J	24" Overall	609.60 mm
K	2"	50.80 mm
L	3/64"	1.2 mm

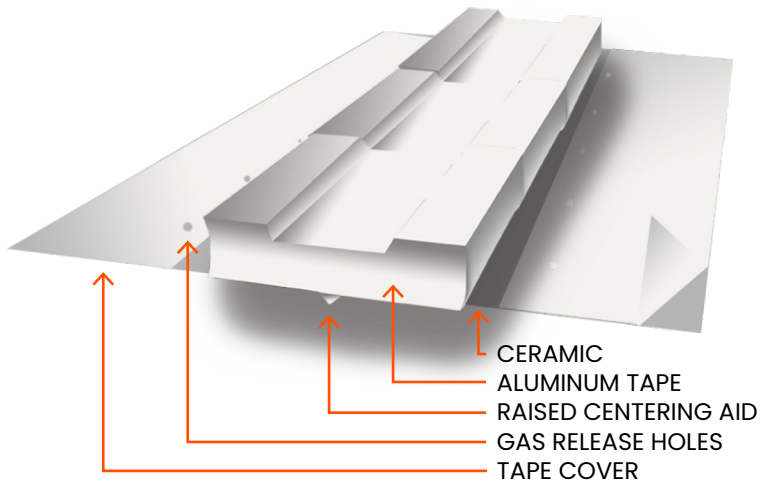
**1G42-FR-1/4 KATBAK® CERAMIC WELD BACKING**



A	1/4"	6.35 mm
B	1"	25.4 mm
C	1/4" Min.	6.35 mm
D	3/16" Radius	4.76 mm
E	4" Tape	101.6 mm
F	24" Overall	609.6 mm
G	2"	50.8 mm

\*Available in 1/4" to 2" (6.3 mm to 50.8 mm) tiles

## KATBAK® - CERAMIC WELD BACKING TAPE



### KATBAK® CERAMIC FEATURES & BENEFITS:

- ✓ A microprocessor controlled gas furnace ensures even temperature control during baking of the ceramics insuring none of the ceramics are under or, over baked.
- ✓ A fume test has been done on the adhesive tape. A copy is on Share File. This test is very important for health and safety.
- ✓ Gullco does NOT use any dangerous components in our ceramics that could cause health issues.
- ✓ Gas holes allow tape to stay in contact with plate holding ceramic tight to the plate being welded.
- ✓ Gullco uses a 4" wide tape which provides superior adhesion to competitive tapes
- ✓ A raise centering aid helps placement and alignment of the ceramic over the joint.
- ✓ Ceramics come with radiused segments to allow better contact with the material.
- ✓ Gullco provides ceramic in 30 foot boxes or slightly more to allow for less waste and are packaged in vacuum sealed bags for longer shelf life. 13) Gullco ceramics are high density ceramics, baked at high temperature to offer the best heat absorption for ensuring excellent quality welds.

As a manufacturer and distributor of ceramics, Gullco can provide you with a KATBAK® ceramic weld backing to meet your needs. To maximize the benefits of your KATBAK® ceramic use in combination with the KAT® weld automation carriage.



**WELD - FRONT SIDE USING KAT® AUTOMATION**



**WELD - BACKSIDE USING KATBAK®**

KAT300-17-01

GULLCO, KAT, KBM, MOGGY, KATBAK & SAM are registered trademarks of Gullco Enterprises Limited

**CANADA - GULLCO INTERNATIONAL LIMITED** Tel: +1 905 953 4140 · Email: sales@gullco.com

**USA - GULLCO INTERNATIONAL INC.** Tel: +1 440 439 8333 · Email: ussales@gullco.com

**EUROPE - GULLCO INTERNATIONAL (U.K) LIMITED** Tel: +44(0) 1257 253579 · Email: uksales@gullco.com

**AUSTRALIA - GULLCO INTERNATIONAL PTY LTD..** Tel: + 61 (0) 7 3348 5515 · Email: ausales@gullco.com

**INDIA - GULLCO INTERNATIONAL INDIA PVT LTD.** Tel: +91 72 7606 0382 · Email: indsales@gullco.com

**CHINA - GULLCO INTERNATIONAL SHANGHAI LIMITED** Tel: +8621.50460341 · Email: suntech@online.sh.cn

**SINGAPORE - GULLCO INTERNATIONAL LIMITED** Tel: 1(416)801-9946 · Email: anmin@gullco.com

**GERMANY - MS GMBH MELCHIOR SCHWEISSTECHNIK** Tel: +49 (0)173 5437722 · Email: dennis.wagener@ms-gmbh.com

**LATIN AMERICA - WELDSPRAY CONSULTING LLC** Tel: +55 11 96590 3883 · Email: rogerio.macedo@gullco.com

**AFRICA - WELDPLUS PTY LTD** Tel: +27 83 775 1144 · Email: john@weldplusintl.com